



LOT SIZE:

Approx. 5.33 Acres

PRICE:

\$12.00 PSF | \$2,786,098.00

HIGHLIGHTS:

- Zoning: Industrial—Morton County
- Easy access to I94, Old Red Trail & Hwy 1806
- Located near Walmart, Kramer Subaru, Starion Sports Complex, Mandan Parks & Rec Tennis Dome and Mandan High School.



Mathew Reichert

Founder | Partner | CCIM

701.223.2450

matt@aspengrouprealestate.com



Charles Reichert

Commercial Realtor®

701.223.2450

charles@aspengrouprealestate.com

424 S 3rd Street, Suite 2 | Bismarck, ND | WWW.ASPENGROUPREALESTATE.COM

This information has been secured from sources we believe to be reliable, but we make no representation or warranties, expressed or implied, as to the accuracy of the information. All references to age, square footage, income and expenses are approximate. Buyers or lessors should conduct their own independent investigations and rely on those results.

PROPERTY DETAILS

PID #: 65-1068500

LEGAL DESCRIPTION: Lot 1, Block 1, Froelich Oil Addition (less ROW 1.04 acres & Less RW 3552 SF & Less RW 11,618 SF), 7.68 Acres

LOT SIZE: Approx. 5.33 Acres*

ZONING: Industrial

2023 TAXES: \$14,978.05

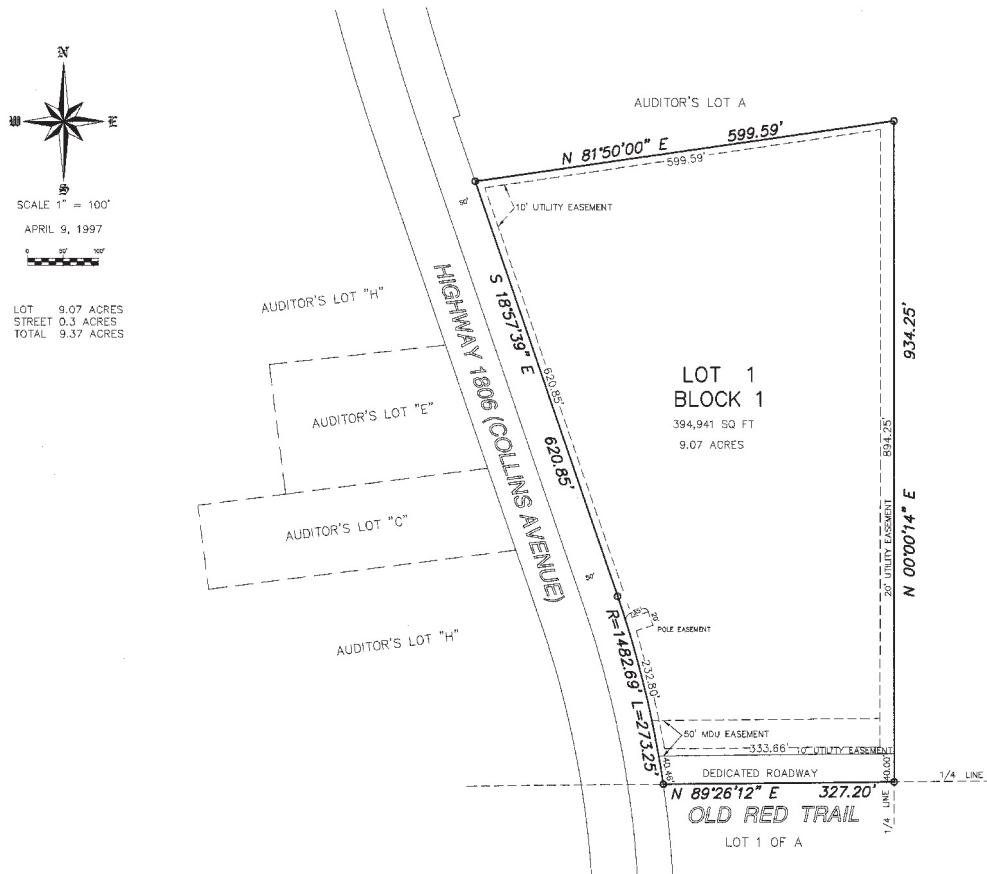
SPECIAL ASSESSMENTS: \$1,852.09 Installment; \$16,452.35 Remaining Balance

**The property plat exhibits 9.07 acres, however only approximately 5.33 acres will be sold*

FROELICH OIL ADDITION PART OF AUDITOR'S LOT A OF THE E1/2 NW1/4 SECTION 22, T. 139 N., R. 81 W.

LYING WITHIN THE ONE MILE EXTRATERRITORIAL JURISDICTION OF THE CITY OF MANDAN, N.D.

MORTON COUNTY, NORTH DAKOTA



424 S 3rd Street, Suite 2 | Bismarck, ND | WWW.ASPENGROUPREALESTATE.COM

This information has been secured from sources we believe to be reliable, but we make no representation or warranties, expressed or implied, as to the accuracy of the information. All references to age, square footage, income and expenses are approximate. Buyers or lessors should conduct their own independent investigations and rely on those results.

LOCATION MAP

