



**ADDITIONAL LAND AVAILABLE TO BUILD MORE UNITS!**

## **SPACE AVAILABLE:**

10,696 SF

## **PRICE:**

\$1,630,000.00



## **Mike Ilse**

**Broker | Partner  
Commercial Realtor®**

**701.223.2450**

[mike@aspengrouprealestate.com](mailto:mike@aspengrouprealestate.com)

## **HIGHLIGHTS:**

- Multiple Units
- Each unit has its own entrance
- (5) 14'x14' Overhead Doors
- 3 Phase Power
- 18' Sidewalls
- Radiant Heat
- Floor Drains
- Sprinkler System
- Concrete Parking Lot

**424 S 3rd Street, Suite 2 | Bismarck, ND | [WWW.ASPENGROUPREALESTATE.COM](http://WWW.ASPENGROUPREALESTATE.COM)**

This information has been secured from sources we believe to be reliable, but we make no representation or warranties, expressed or implied, as to the accuracy of the information. All references to age, square footage, income and expenses are approximate. Buyers or lessors should conduct their own independent investigations and rely on those results.





## PROPERTY PHOTOS



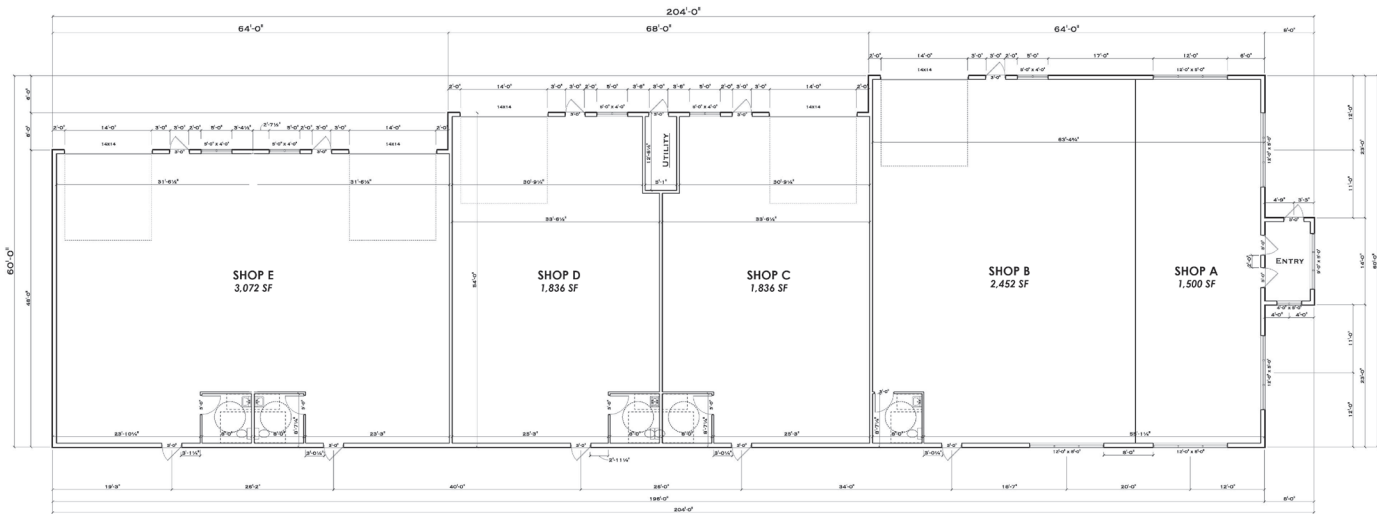
**424 S 3rd Street, Suite 2 | Bismarck, ND | [WWW.ASPENGROUPREALESTATE.COM](http://WWW.ASPENGROUPREALESTATE.COM)**

This information has been secured from sources we believe to be reliable, but we make no representation or warranties, expressed or implied, as to the accuracy of the information. All references to age, square footage, income and expenses are approximate. Buyers or lessors should conduct their own independent investigations and rely on those results.

# FLOOR PLAN

NOTES:  
18' TALL SHOP WALLS  
10' TALL ENTRY WALLS  
2XB EXTERIOR WALLS  
2XB DIVIDING WALLS

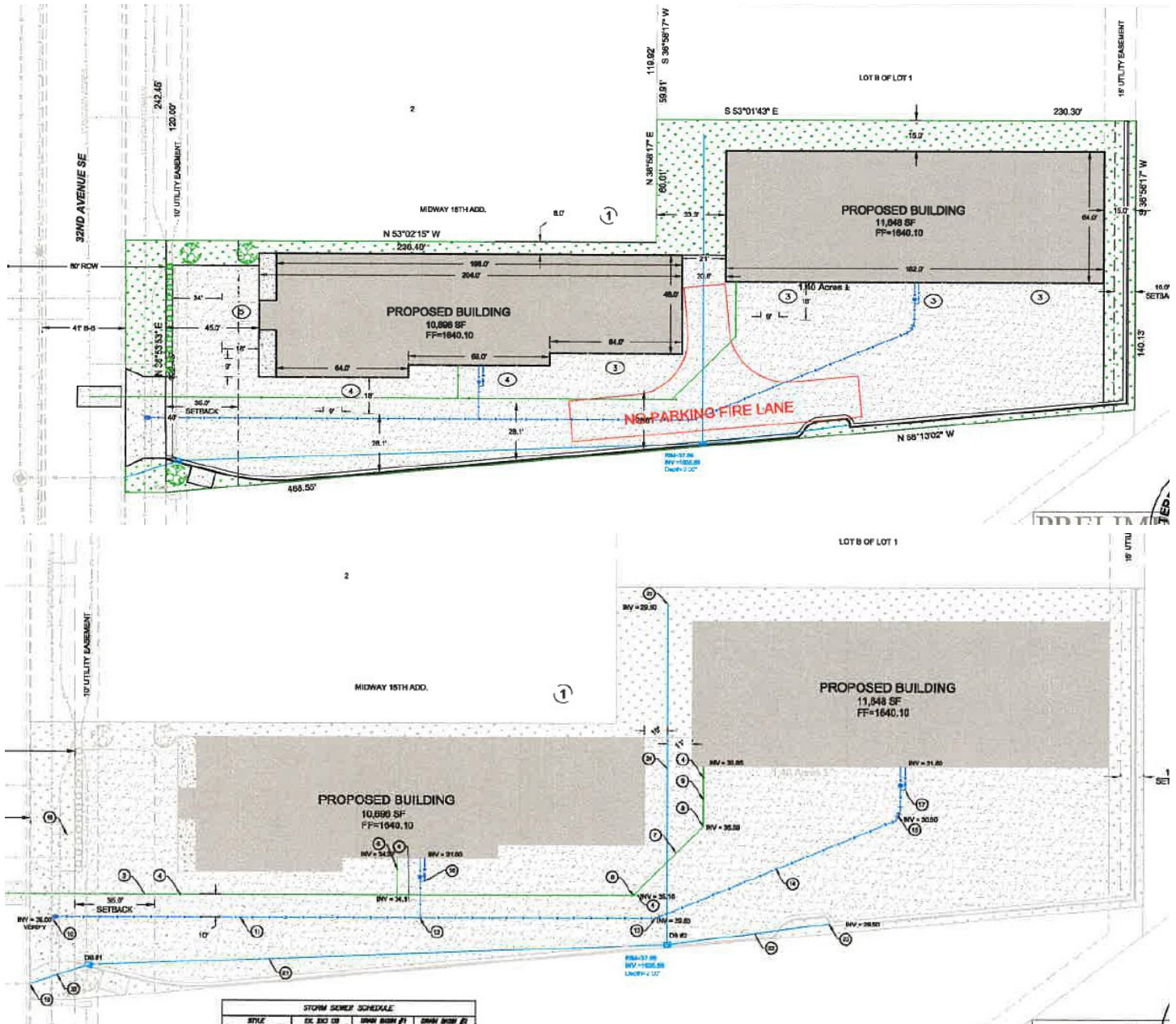
TOTAL AREA 10,696.0 SQ FT



**424 S 3rd Street, Suite 2 | Bismarck, ND | [WWW.ASPENGROUPREALESTATE.COM](http://WWW.ASPENGROUPREALESTATE.COM)**

This information has been secured from sources we believe to be reliable, but we make no representation or warranties, expressed or implied, as to the accuracy of the information. All references to age, square footage, income and expenses are approximate. Buyers or lessors should conduct their own independent investigations and rely on those results.

# PROPOSED SECOND BUILDING



424 S 3rd Street, Suite 2 | Bismarck, ND | [WWW.ASPENGROUPREALESTATE.COM](http://WWW.ASPENGROUPREALESTATE.COM)

This information has been secured from sources we believe to be reliable, but we make no representation or warranties, expressed or implied, as to the accuracy of the information. All references to age, square footage, income and expenses are approximate. Buyers or lessors should conduct their own independent investigations and rely on those results.



# LOCATION MAP & TRAFFIC COUNTS



**424 S 3rd Street, Suite 2 | Bismarck, ND | [WWW.ASPENGROUPREALESTATE.COM](http://WWW.ASPENGROUPREALESTATE.COM)**

This information has been secured from sources we believe to be reliable, but we make no representation or warranties, expressed or implied, as to the accuracy of the information. All references to age, square footage, income and expenses are approximate. Buyers or lessors should conduct their own independent investigations and rely on those results.