



SPACE AVAILABLE:

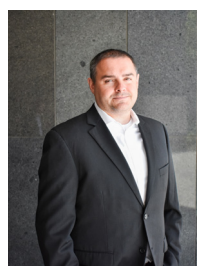
SUITE 104 | 1,096 SF

PRICE:

\$17.00 PSF - Full Service

HIGHLIGHTS:

- **Available May 1st 2025**
- 4 Private Offices
- Reception Area
- Interior Office Windows
- Common Area Restrooms
- Handicap Accessible
- Sign on exterior monument directory provided at no extra charge
- Tenant responsible for interior janitorial
- 3 Year Minimum
- All Utilities Paid minus phone/Internet. Heat, lights, water, common area & external maintenance. Lawn Care & Snow removal included.



Mike Ilse

Broker | Partner
Commercial Realtor®

701.223.2450

mike@aspengrouprealestate.com



Maddi Dymerski

Commercial Realtor®
Marketing Specialist

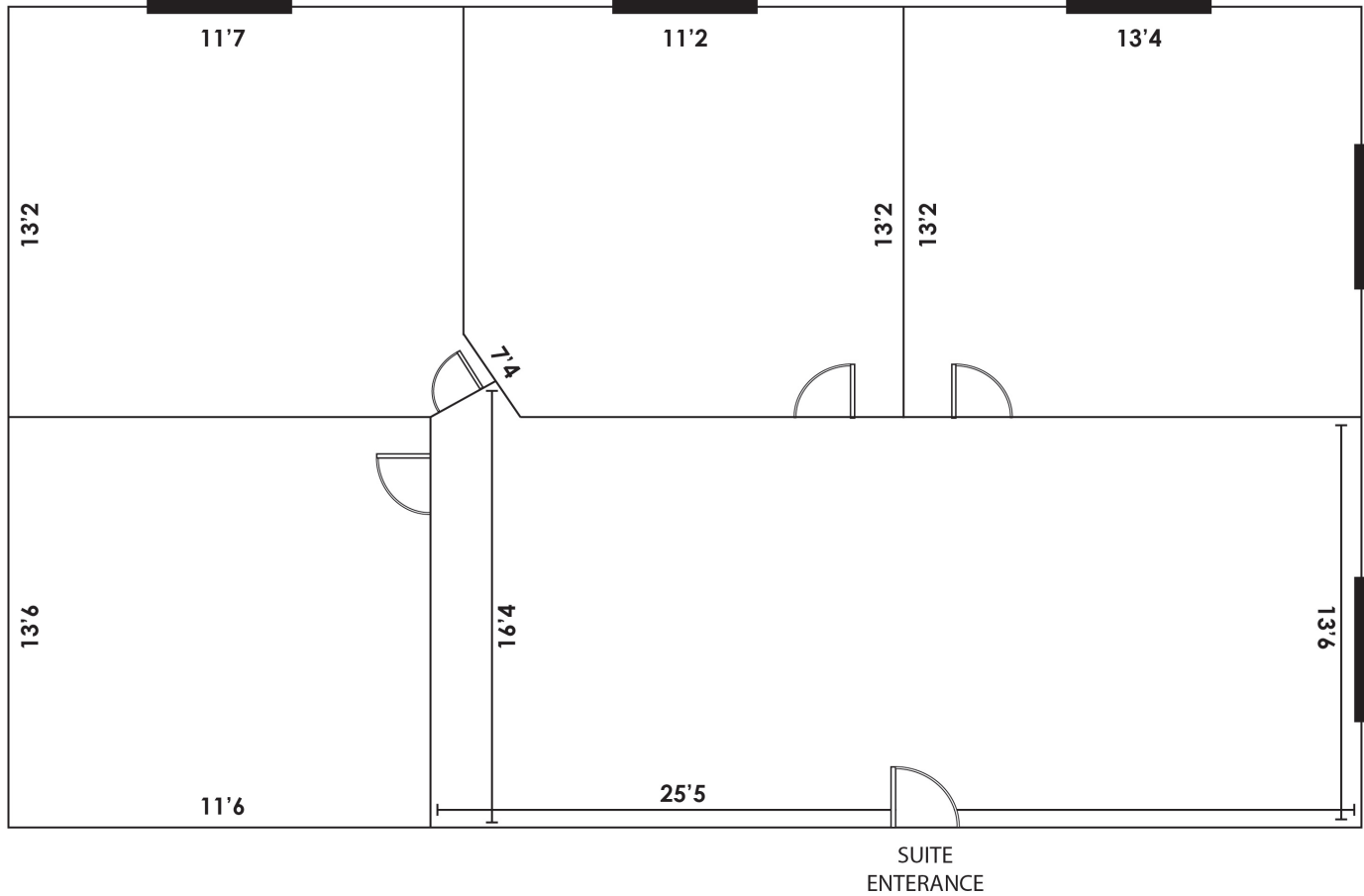
701.223.2450

maddi@aspengrouprealestate.com

424 S 3rd Street, Suite 2 | Bismarck, ND | WWW.ASPENGROUPREALESTATE.COM

This information has been secured from sources we believe to be reliable, but we make no representation or warranties, expressed or implied, as to the accuracy of the information. All references to age, square footage, income and expenses are approximate. Buyers or lessors should conduct their own independent investigations and rely on those results.

FLOOR PLAN



424 S 3rd Street, Suite 2 | Bismarck, ND | WWW.ASPENGROUPREALESTATE.COM

This information has been secured from sources we believe to be reliable, but we make no representation or warranties, expressed or implied, as to the accuracy of the information. All references to age, square footage, income and expenses are approximate. Buyers or lessors should conduct their own independent investigations and rely on those results.

PHOTOS



424 S 3rd Street, Suite 2 | Bismarck, ND | WWW.ASPENGROUPREALESTATE.COM

This information has been secured from sources we believe to be reliable, but we make no representation or warranties, expressed or implied, as to the accuracy of the information. All references to age, square footage, income and expenses are approximate. Buyers or lessors should conduct their own independent investigations and rely on those results.

LOCATION MAP



424 S 3rd Street, Suite 2 | Bismarck, ND | WWW.ASPENGROUPREALESTATE.COM

This information has been secured from sources we believe to be reliable, but we make no representation or warranties, expressed or implied, as to the accuracy of the information. All references to age, square footage, income and expenses are approximate. Buyers or lessors should conduct their own independent investigations and rely on those results.