



SPACE AVAILABLE:

LOT: 6,500 SF
BUILDING: 12,922 SF

PRICE:

\$1,325,000.00



Michael Ilse

Broker Associate | Partner
Commercial Realtor®

701.223.2450
mike@aspengrouprealestate.com

HIGHLIGHTS:

- Historic Commercial Building
- Built in 1880
- 3 Floors with Elevator Access to each floor
- 100% Occupancy
- Updated & Modern Finishes
- New Roof
- Large windows with tons of natural light

424 S 3rd Street, Suite 2 | Bismarck, ND | WWW.ASPENGROUPREALESTATE.COM

This information has been secured from sources we believe to be reliable, but we make no representation or warranties, expressed or implied, as to the accuracy of the information. All references to age, square footage, income and expenses are approximate. Buyers or lessors should conduct their own independent investigations and rely on those results.

PROPERTY INFO

PID#: 0001-052-055

LEGAL DESCRIPTION: ORIGINAL PLAT Block: 52 LOTS 17-18

PROPERTY ADDRESS: 200 E Main Avenue, Bismarck ND

LOT SIZE: 6,500 SF (0.15 Acres)

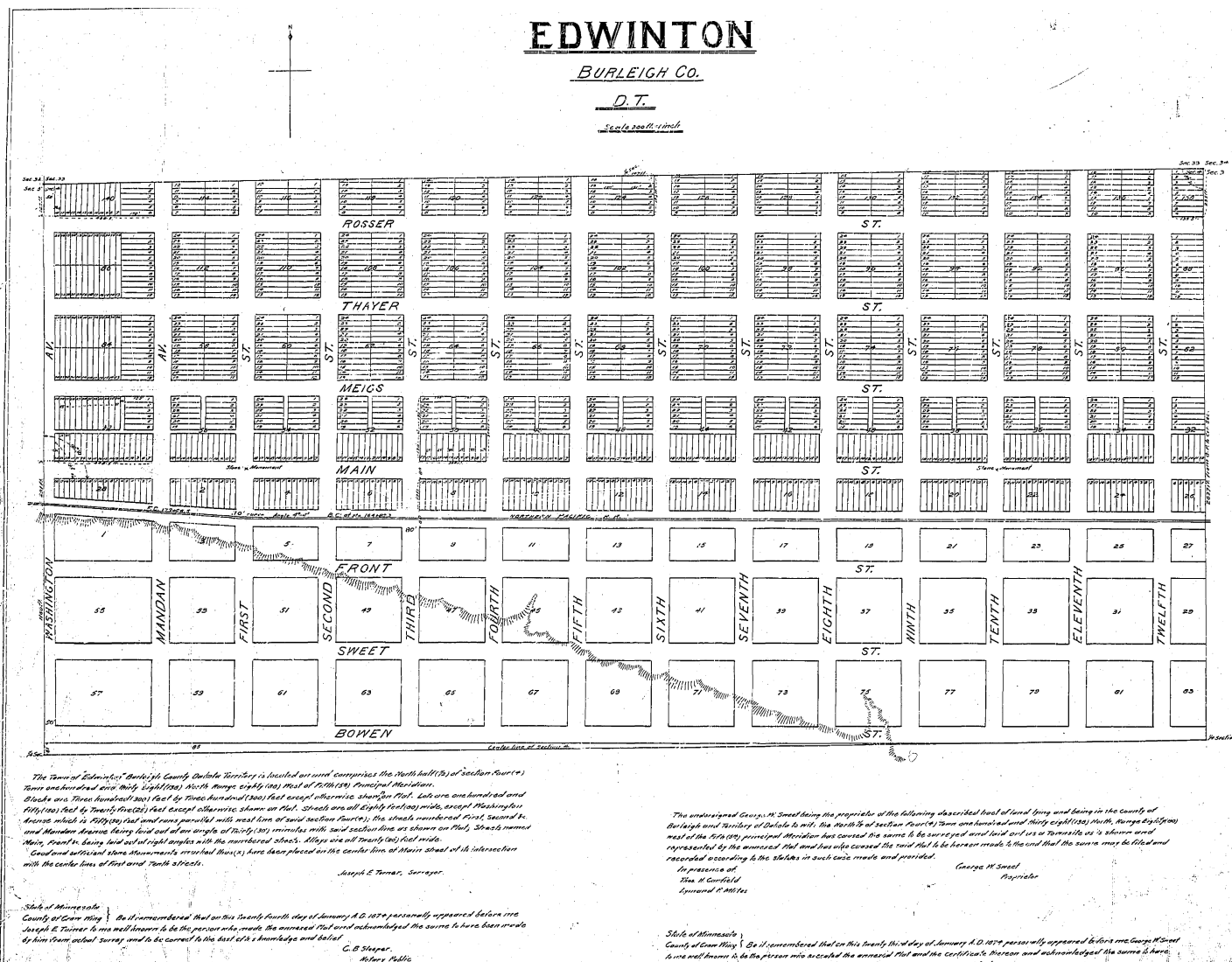
LAND PROPERTY CLASS: Commercial

ZONING: Core Zoning District

YEAR BUILT: 1880

2023 TAXES: \$14,492.04

SPECIAL ASSESSMENTS: \$474.01 Installment; \$2,844.12 Remaining Balance



424 S 3rd Street, Suite 2 | Bismarck, ND | WWW.ASPENGROUPREALESTATE.COM

This information has been secured from sources we believe to be reliable, but we make no representation or warranties, expressed or implied, as to the accuracy of the information. All references to age, square footage, income and expenses are approximate. Buyers or lessors should conduct their own independent investigations and rely on those results.

PROPERTY PHOTOS



424 S 3rd Street, Suite 2 | Bismarck, ND | WWW.ASPENGROUPREALESTATE.COM

This information has been secured from sources we believe to be reliable, but we make no representation or warranties, expressed or implied, as to the accuracy of the information. All references to age, square footage, income and expenses are approximate. Buyers or lessors should conduct their own independent investigations and rely on those results.

PROPERTY PHOTOS



424 S 3rd Street, Suite 2 | Bismarck, ND | WWW.ASPENGROUPREALESTATE.COM

This information has been secured from sources we believe to be reliable, but we make no representation or warranties, expressed or implied, as to the accuracy of the information. All references to age, square footage, income and expenses are approximate. Buyers or lessors should conduct their own independent investigations and rely on those results.

PROPERTY PHOTOS



424 S 3rd Street, Suite 2 | Bismarck, ND | WWW.ASPENGROUPREALESTATE.COM

This information has been secured from sources we believe to be reliable, but we make no representation or warranties, expressed or implied, as to the accuracy of the information. All references to age, square footage, income and expenses are approximate. Buyers or lessors should conduct their own independent investigations and rely on those results.

JOIN DOWNTOWN BISMARCK!

FOOD & DRINK

Amina Cucina
Bistro 1100
Blarney Stone Pub
Borrowed Bucks Roadhouse
Brick Oven Bakery
Broadway Grill & Tavern
Burger Time
Butterhorn
Coffee Break
Craftcade
Dairy Queen
Elbow Room
Fireflour Pizzeria
Gideon's Brewing Company
Jimmy V's
JL Beers
India Clay Oven
LUFT
McDonalds
NoodleZip
Nutrition Ambition
Peacock Alley
Pirogue Grille
Roundhouse
Gastro Pub
Toasted Frog

SHOPPING/RETAIL

Blink Eyewear
Boutique 23
Bridal N' More
Brides on a Dime
Crabapple Floral
Dakota Nuts-N-Candy
Ferguson Books & More Fleck's
Furniture & Appliance
Halberstadt's ND
J & R Vacuum & Sewing
Kokkeler's Jewelry
lula b. boutique
Modern Eyes
Red Wing Shoes
Seeds of Hope Thrift Store
Spaces
Stella's
Terry's Health Products
Walker's n' Daughters Jewelers
Westley's Jewelry
Zimmerman's Furniture

BANKING/FINANCIAL

American Bank Center
Ameriprise Financial
BNC National Bank
Capital Credit Union
Choice Bank
Country Financial
First Western Bank & Trust
Gate City Bank
Kirkwood Bank & Trust
Starion Bank
US Bank
Vue Community Credit Union Wells Fargo

HEALTH/MEDICAL

Active Life Chiropractic
Bismarck-Burleigh Public Health
CHI St. Alexius Hospital
CHI St. Alexius Urgent Care
Dakota Eye Institute
Dakota Pharmacy
Mid Dakota Clinic
Prairie Rose Family Dentists
Proxima150
Sanford Health
Smiles By Design
UND Center for Family Medicine

COMMUNITY/RECREATION

Belle Mehus Auditorium
Bismarck Municipal Ball Park
Bismarck Art & Galleries Assn
Bismarck Event Center
Bismarck Veterans Memorial Public
Library
The Capital Gallery
Custer Park
Dakota Stage Ltd.
Elks Aquatic Center
Peace Park
World War Memorial Building

PROFESSIONAL SERVICES

Alchemist Tattoo
The Barber's Wife
Black Sheep Tattoo
Broadway Centre Spa & Salon
Derma Care Clinic
Glance Salon & Spa
Hi Honey Salon
Pure Skin Aesthetic & Laser Center
Rejuvenation Place



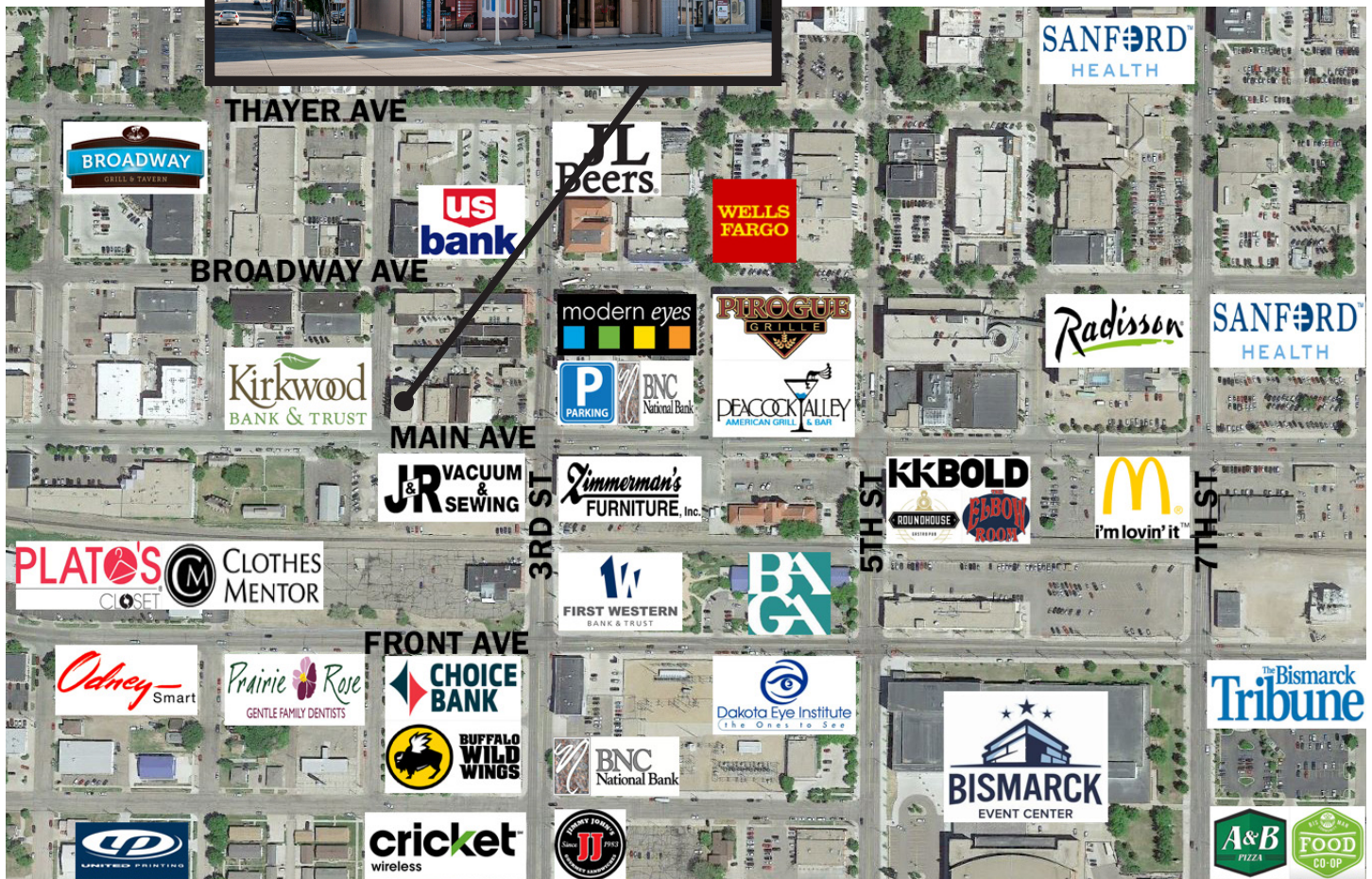
Michael Ilse

Broker Associate | Partner
Commercial Realtor®

701.223.2450

mike@aspengroupprealestate.com

LOCATION MAP



Michael Ilse
Broker Associate | Partner
Commercial Realtor®
701.223.2450
maike@aspengrouprealestate.com