



SPACE AVAILABLE:

Building | 13,639 SF
Lot | 160,798 SF (3.69 Acres)
+ Land to West | 87,111 SF (2 Acres)

PRICE:

\$2,700,000.00



Charles Reichert

Partner | Commercial Realtor®

701.223.2450

charles@aspengroupprealstate.com

HIGHLIGHTS:

- 10,217 SF Warehouse
- 3,422 SF Two Story Office Space
- 9 Private Offices
- Break Room
- Conference Room
- Storage Room/IT Room
- Warehouse
 - (4) 16 x 14 Overhead Doors
 - (1) 12 x 10 Overhead Door
 - Trench Drainage
 - Gas Heaters
 - Ceiling Fans
 - 1 Restroom
 - 20' Sidewalls

*** Bins are not included*

424 S 3rd Street, Suite 2 | Bismarck, ND | WWW.ASPENGROUPPREALESTATE.COM

This information has been secured from sources we believe to be reliable, but we make no representation or warranties, expressed or implied, as to the accuracy of the information. All references to age, square footage, income and expenses are approximate. Buyers or lessors should conduct their own independent investigations and rely on those results.

PROPERTY INFORMATION

2002 NORTHERN PLAINS DRIVE, BISMARCK

PID#: 1997-001-430

LEGAL DESCRIPTION: NORTHERN PLAINS COMMERCE CENTRE 2ND ADDN BLOCK 1 LOT 24

LOT SIZE: 160,798 SF (3.69 Acres)

BUILDING SIZE: 13,639 SF

BUILT IN: 2014

2024 TAXES: \$30,640.88

SPECIAL ASSESSMENTS: \$7,938.09 Installment; \$30,405.29 Remaining Balance

2016 NORTHERN PLAINS DRIVE, BISMARCK

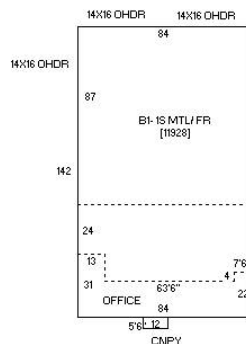
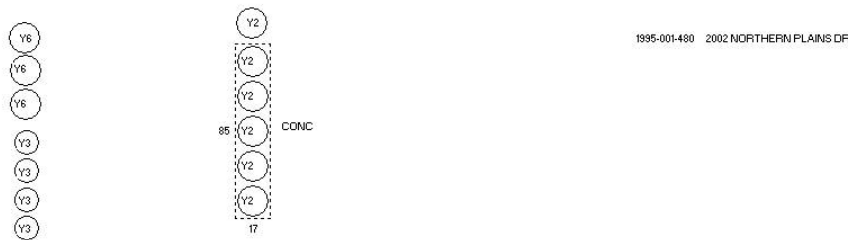
PID#: 1997-001-445

LEGAL DESCRIPTION: NORTHERN PLAINS COMMERCE CENTRE 2ND ADDN BLOCK 1 LOT 25

LOT SIZE: 87,111 SF (2 Acres)

2024 TAXES: \$6,737.04

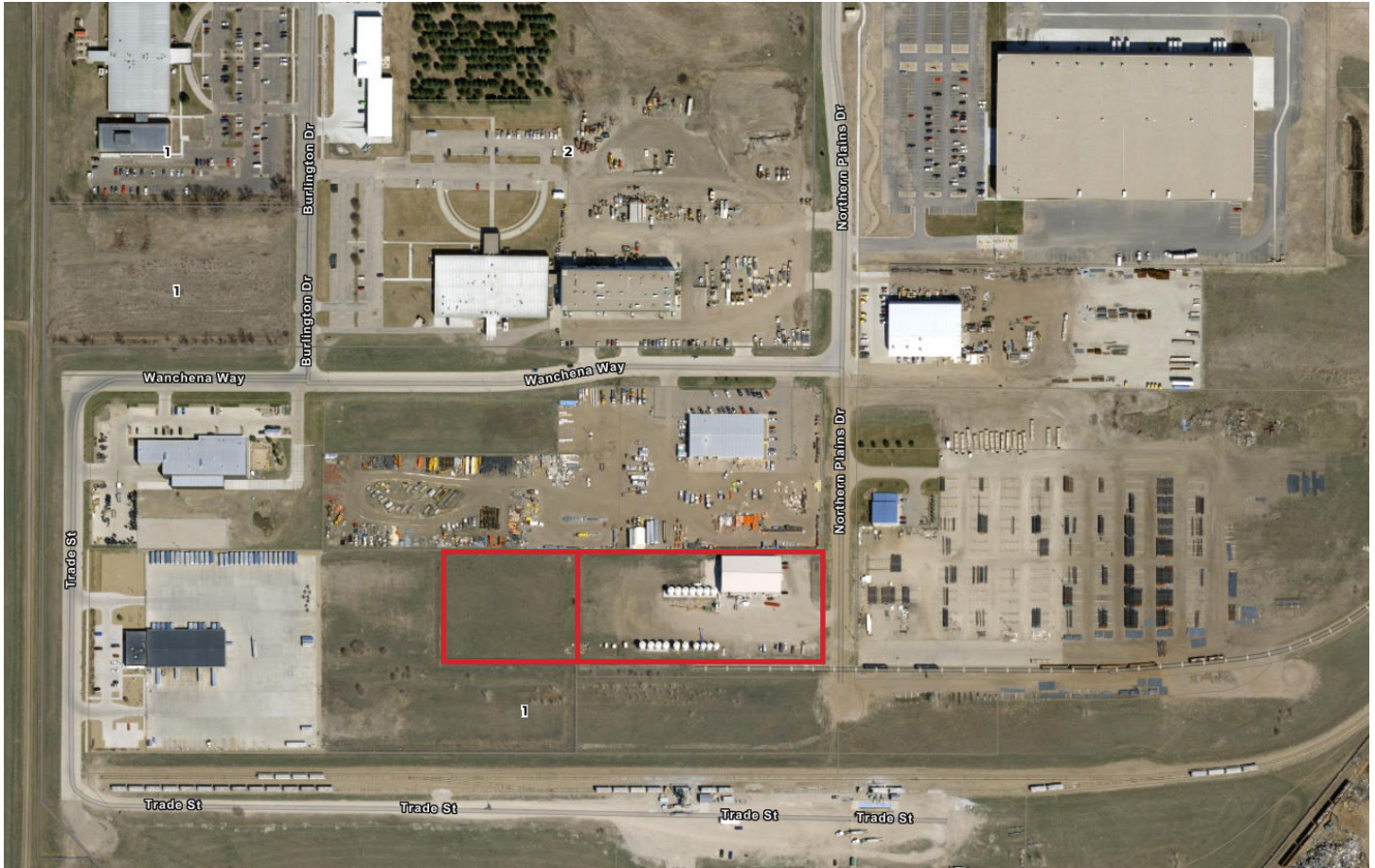
SPECIAL ASSESSMENTS: \$3,967.96 Installment; \$15,129.99 Remaining Balance



424 S 3rd Street, Suite 2 | Bismarck, ND | WWW.ASPENGROUPREALESTATE.COM

This information has been secured from sources we believe to be reliable, but we make no representation or warranties, expressed or implied, as to the accuracy of the information. All references to age, square footage, income and expenses are approximate. Buyers or lessors should conduct their own independent investigations and rely on those results.

AERIAL VIEW



424 S 3rd Street, Suite 2 | Bismarck, ND | WWW.ASPENGROUPREALESTATE.COM

This information has been secured from sources we believe to be reliable, but we make no representation or warranties, expressed or implied, as to the accuracy of the information. All references to age, square footage, income and expenses are approximate. Buyers or lessors should conduct their own independent investigations and rely on those results.

EXTERIOR PROPERTY PHOTOS

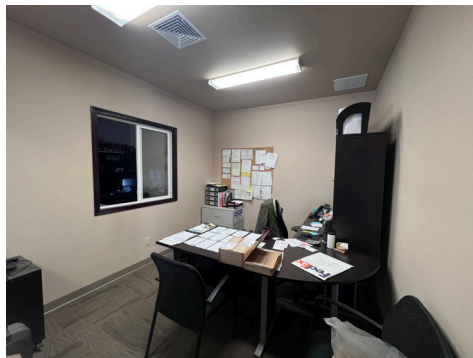
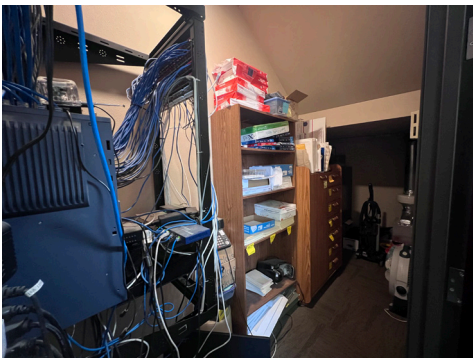


***Bins are not included*

424 S 3rd Street, Suite 2 | Bismarck, ND | WWW.ASPENGROUPREALESTATE.COM

This information has been secured from sources we believe to be reliable, but we make no representation or warranties, expressed or implied, as to the accuracy of the information. All references to age, square footage, income and expenses are approximate. Buyers or lessors should conduct their own independent investigations and rely on those results.

OFFICE PHOTOS (1ST FLOOR)



424 S 3rd Street, Suite 2 | Bismarck, ND | WWW.ASPENGROUPREALESTATE.COM

This information has been secured from sources we believe to be reliable, but we make no representation or warranties, expressed or implied, as to the accuracy of the information. All references to age, square footage, income and expenses are approximate. Buyers or lessors should conduct their own independent investigations and rely on those results.

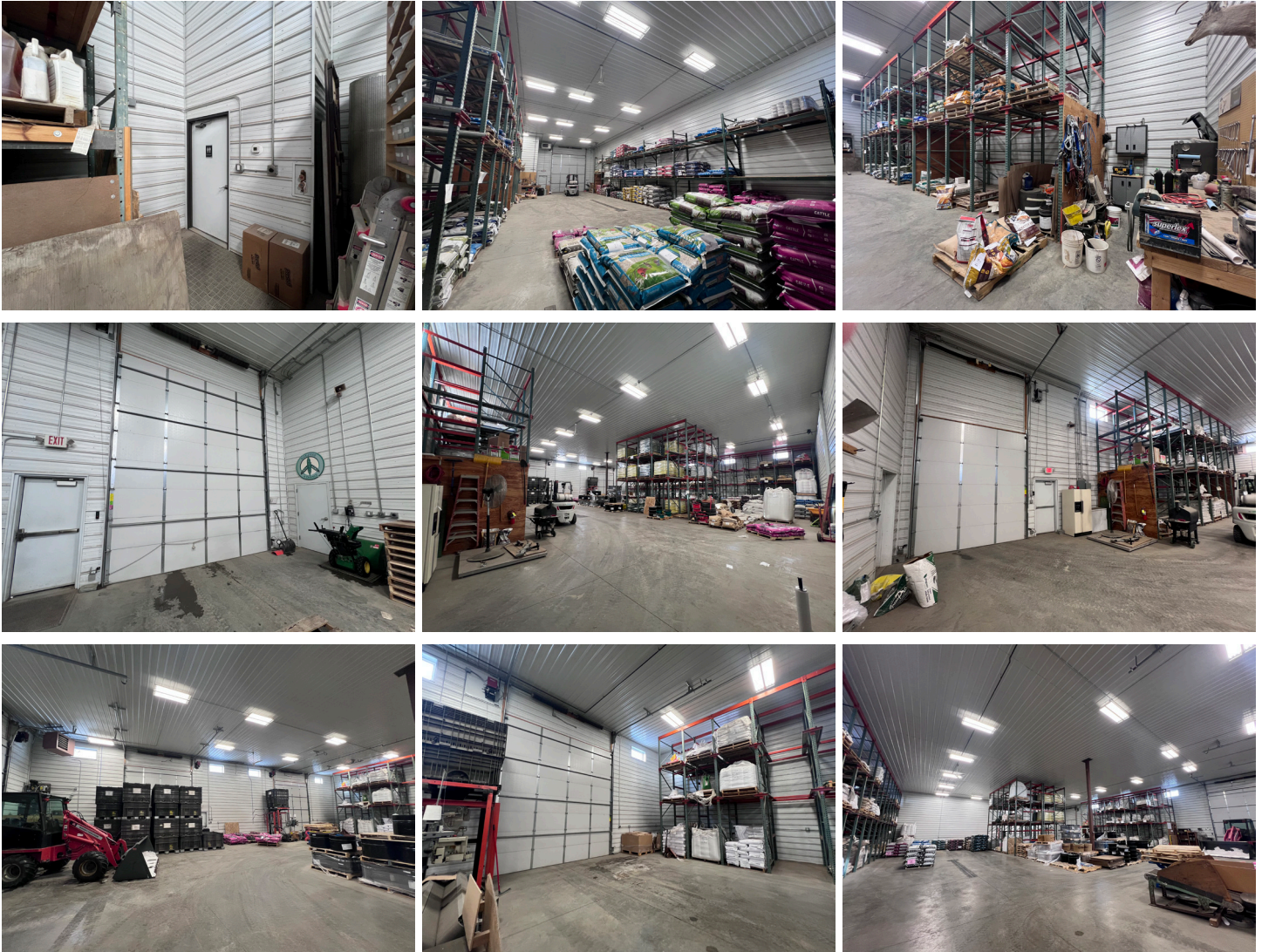
OFFICE PHOTOS (2ND FLOOR)



424 S 3rd Street, Suite 2 | Bismarck, ND | WWW.ASPENGROUPREALESTATE.COM

This information has been secured from sources we believe to be reliable, but we make no representation or warranties, expressed or implied, as to the accuracy of the information. All references to age, square footage, income and expenses are approximate. Buyers or lessors should conduct their own independent investigations and rely on those results.

WAREHOUSE PHOTOS



424 S 3rd Street, Suite 2 | Bismarck, ND | WWW.ASPENGROUPREALESTATE.COM

This information has been secured from sources we believe to be reliable, but we make no representation or warranties, expressed or implied, as to the accuracy of the information. All references to age, square footage, income and expenses are approximate. Buyers or lessors should conduct their own independent investigations and rely on those results.

LOCATION MAP



424 S 3rd Street, Suite 2 | Bismarck, ND | WWW.ASPENGROUPREALESTATE.COM

This information has been secured from sources we believe to be reliable, but we make no representation or warranties, expressed or implied, as to the accuracy of the information. All references to age, square footage, income and expenses are approximate. Buyers or lessors should conduct their own independent investigations and rely on those results.