



**SPACE AVAILABLE:**  
1,288 SF

**PRICE:**  
\$21.00 PSF + \$5.50 PSF CAM

**HIGHLIGHTS:**

- 3 Private Offices
- Conference Room
- Reception Area
- Open Work Area
- Kitchenette



**Mike Ilse**

Broker | Partner | Commercial Realtor®

**701.223.2450**

[mike@aspengrouprealestate.com](mailto:mike@aspengrouprealestate.com)



**Charles Reichert**

Commercial Realtor® | Partner

**701.223.2450**

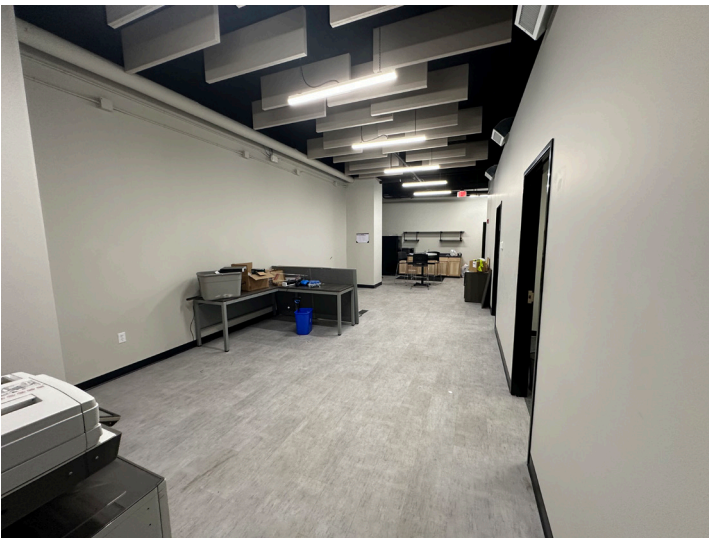
[charles@aspengrouprealestate.com](mailto:charles@aspengrouprealestate.com)

**424 S 3rd Street, Suite 2 | Bismarck, ND | [WWW.ASPENGROUPREALESTATE.COM](http://WWW.ASPENGROUPREALESTATE.COM)**

This information has been secured from sources we believe to be reliable, but we make no representation or warranties, expressed or implied, as to the accuracy of the information. All references to age, square footage, income and expenses are approximate. Buyers or lessors should conduct their own independent investigations and rely on those results.



## INTERIOR PHOTOS



**424 S 3rd Street, Suite 2 | Bismarck, ND | [WWW.ASPENGROUPREALESTATE.COM](http://WWW.ASPENGROUPREALESTATE.COM)**

This information has been secured from sources we believe to be reliable, but we make no representation or warranties, expressed or implied, as to the accuracy of the information. All references to age, square footage, income and expenses are approximate. Buyers or lessors should conduct their own independent investigations and rely on those results.



## AREA 57 HIGHLIGHTS



- Serves as a multi-purpose environment where living, shopping, working, playing and socializing coexist.
- State-of-the-Art New Construction
- Located in North Bismarck just off of Washington Street. Near major retailers such as Dicks Sporting Goods, HomeGoods, Costco, Fleet Farm and more!
- (4) Mixed-used, 4-story building featuring numerous apartments and street level commercial spaces

**424 S 3rd Street, Suite 2 | Bismarck, ND | [WWW.ASPENGROUPREALESTATE.COM](http://WWW.ASPENGROUPREALESTATE.COM)**

This information has been secured from sources we believe to be reliable, but we make no representation or warranties, expressed or implied, as to the accuracy of the information. All references to age, square footage, income and expenses are approximate. Buyers or lessors should conduct their own independent investigations and rely on those results.



# LOCATION MAP



**424 S 3rd Street, Suite 2 | Bismarck, ND | [WWW.ASPENGROUPREALESTATE.COM](http://WWW.ASPENGROUPREALESTATE.COM)**

This information has been secured from sources we believe to be reliable, but we make no representation or warranties, expressed or implied, as to the accuracy of the information. All references to age, square footage, income and expenses are approximate. Buyers or lessors should conduct their own independent investigations and rely on those results.