



SPACE AVAILABLE:

Building Size | 65,999 SF
Lot Size | 185,565 SF (4.26 Acres)

PRICE:

\$3,900,000.00

HIGHLIGHTS:

OFFICE SPACE

- 10 Private Office
- Space for cubicles or open work space
- Men's & Women's Restrooms
- Conference Room
- Kitchenette

WAREHOUSE SPACE

- 25 Total Overhead Doors w/ Docks (2 additional in the back of the building)
 - (4) 8' x 8'
 - (21) 8' x 10'
- 1 Restroom
- Breakroom
- 2 Office Spaces
- Radiant & Fan Forced Natural Gas



Scott Ritter

Broker Associate | Partner
Commercial Realtor®

701.223.2450

scott@aspengrouprealestate.com

424 S 3rd Street, Suite 2 | Bismarck, ND | WWW.ASPENGROUPPREALESTATE.COM

This information has been secured from sources we believe to be reliable, but we make no representation or warranties, expressed or implied, as to the accuracy of the information. All references to age, square footage, income and expenses are approximate. Buyers or lessors should conduct their own independent investigations and rely on those results.

PROPERTY DETAILS

2410 E Bowen Avenue, Bismarck

PID#: 0115-003-670

LEGAL DESCRIPTION: CITY LANDS 138-80 Block: 3 PT SE1/4NE1/4 SEC 3 BEG

BUILDING SIZE: 65,999 SF

LOT SIZE: 129,248 SF

ZONING: MA - Light Industrial

YEAR BUILT: 1957

2023 TAXES: \$43,502.19

SPECIAL ASSESSMENTS: None at this time

2422 E Bowen Avenue, Bismarck

PID#: 0115-003-700

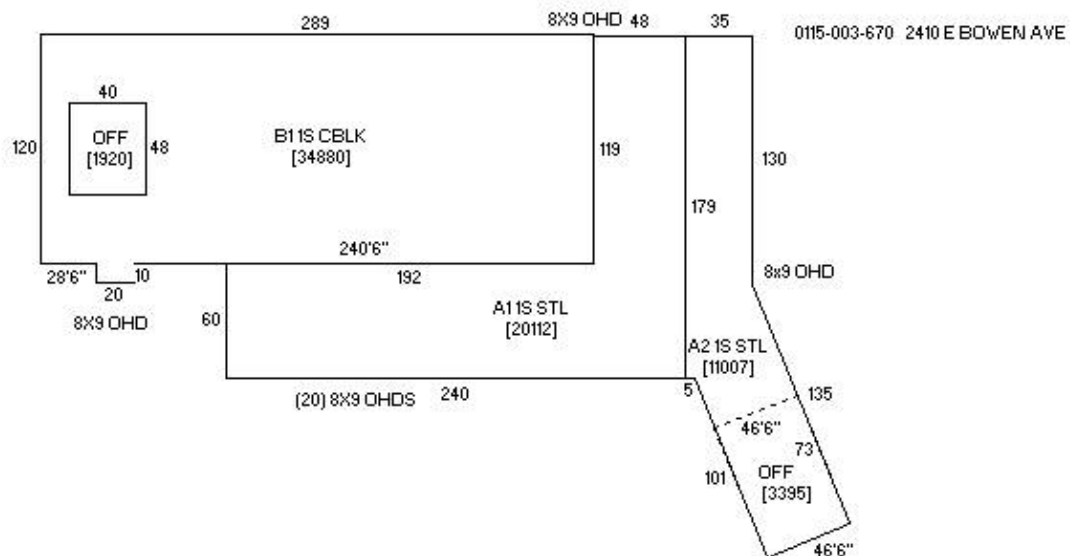
LEGAL DESCRIPTION: CITY LANDS 138-80 Block: 3 PTSE1/4NE1/4 SEC 3 BEG

LOT SIZE: 56,317 SF

ZONING: MA - Light Industrial

2023 TAXES: \$3,176.44

SPECIAL ASSESSMENTS: None at this time



424 S 3rd Street, Suite 2 | Bismarck, ND | WWW.ASPENGROUPREALESTATE.COM

This information has been secured from sources we believe to be reliable, but we make no representation or warranties, expressed or implied, as to the accuracy of the information. All references to age, square footage, income and expenses are approximate. Buyers or lessors should conduct their own independent investigations and rely on those results.

EXTERIOR PHOTOS



424 S 3rd Street, Suite 2 | Bismarck, ND | WWW.ASPENGROUPREALESTATE.COM

This information has been secured from sources we believe to be reliable, but we make no representation or warranties, expressed or implied, as to the accuracy of the information. All references to age, square footage, income and expenses are approximate. Buyers or lessors should conduct their own independent investigations and rely on those results.

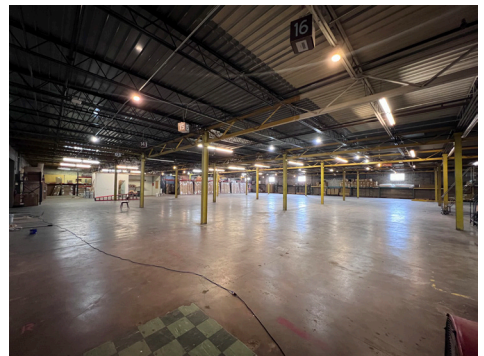
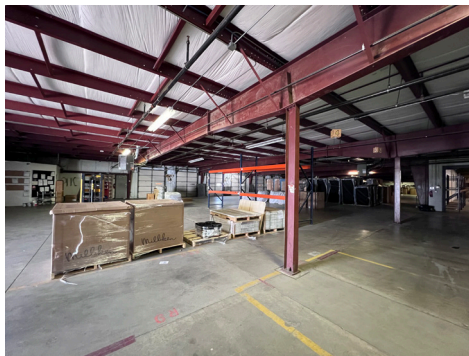
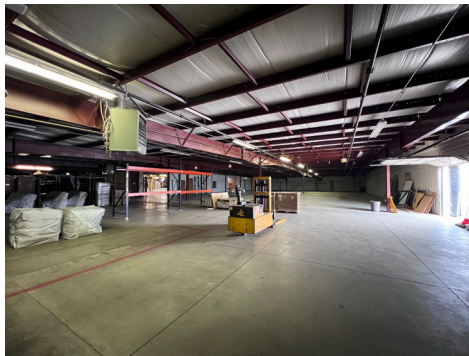
EXTERIOR PHOTOS



424 S 3rd Street, Suite 2 | Bismarck, ND | WWW.ASPENGROUPREALESTATE.COM

This information has been secured from sources we believe to be reliable, but we make no representation or warranties, expressed or implied, as to the accuracy of the information. All references to age, square footage, income and expenses are approximate. Buyers or lessors should conduct their own independent investigations and rely on those results.

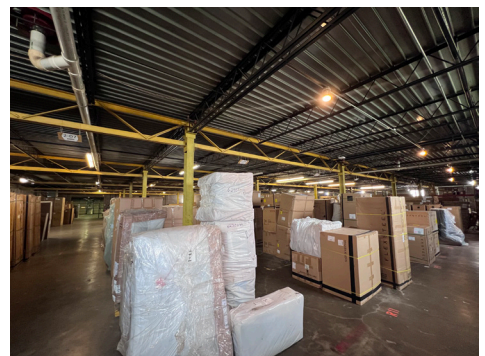
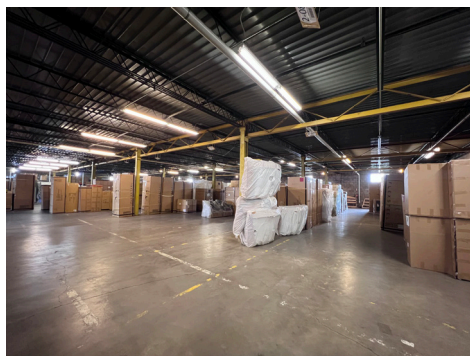
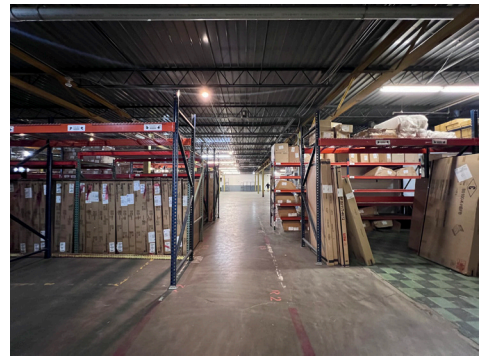
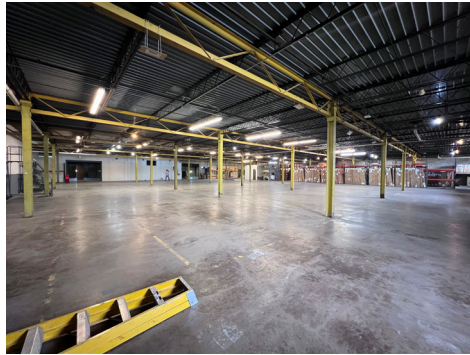
PROPERTY PHOTOS



424 S 3rd Street, Suite 2 | Bismarck, ND | WWW.ASPENGROUPREALESTATE.COM

This information has been secured from sources we believe to be reliable, but we make no representation or warranties, expressed or implied, as to the accuracy of the information. All references to age, square footage, income and expenses are approximate. Buyers or lessors should conduct their own independent investigations and rely on those results.

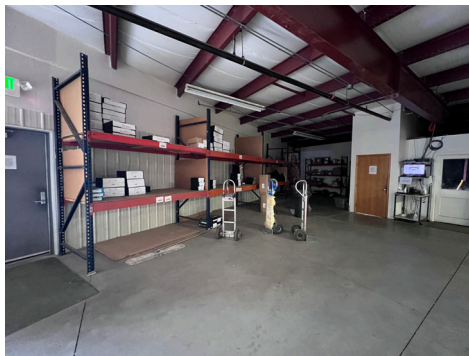
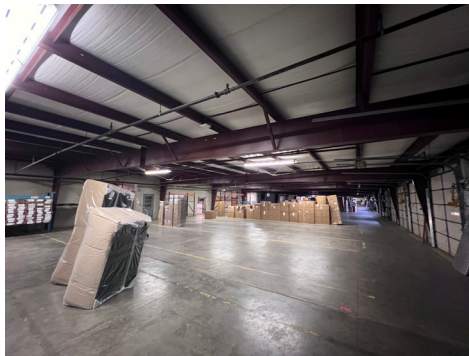
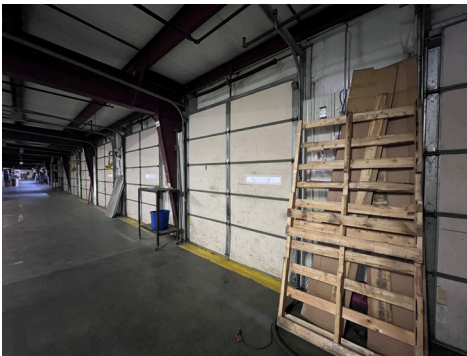
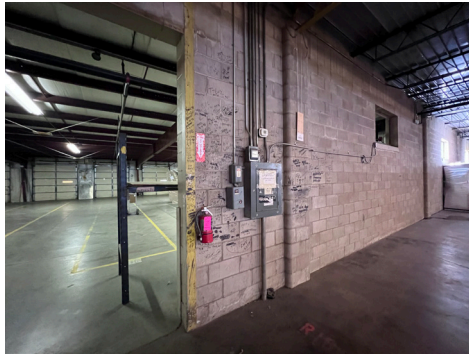
PROPERTY PHOTOS



424 S 3rd Street, Suite 2 | Bismarck, ND | WWW.ASPENGROUPREALESTATE.COM

This information has been secured from sources we believe to be reliable, but we make no representation or warranties, expressed or implied, as to the accuracy of the information. All references to age, square footage, income and expenses are approximate. Buyers or lessors should conduct their own independent investigations and rely on those results.

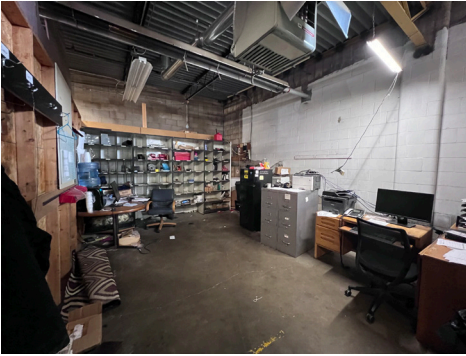
PROPERTY PHOTOS



424 S 3rd Street, Suite 2 | Bismarck, ND | WWW.ASPENGROUPREALESTATE.COM

This information has been secured from sources we believe to be reliable, but we make no representation or warranties, expressed or implied, as to the accuracy of the information. All references to age, square footage, income and expenses are approximate. Buyers or lessors should conduct their own independent investigations and rely on those results.

PROPERTY PHOTOS



424 S 3rd Street, Suite 2 | Bismarck, ND | WWW.ASPENGROUPREALESTATE.COM

This information has been secured from sources we believe to be reliable, but we make no representation or warranties, expressed or implied, as to the accuracy of the information. All references to age, square footage, income and expenses are approximate. Buyers or lessors should conduct their own independent investigations and rely on those results.

LOCATION MAP



424 S 3rd Street, Suite 2 | Bismarck, ND | WWW.ASPENGROUPREALESTATE.COM

This information has been secured from sources we believe to be reliable, but we make no representation or warranties, expressed or implied, as to the accuracy of the information. All references to age, square footage, income and expenses are approximate. Buyers or lessors should conduct their own independent investigations and rely on those results.