



SPACE AVAILABLE:

800 SF

PRICE:

\$13.50 PSF - Full Service

HIGHLIGHTS:

- Reception Area
- 3 Private Offices
- Storage Room
- Common Area Restrooms
- Off-Street Parking
- Convenient location between Bismarck & Mandan



Mike Ilse

Broker Associate | Partner
Commercial Realtor®

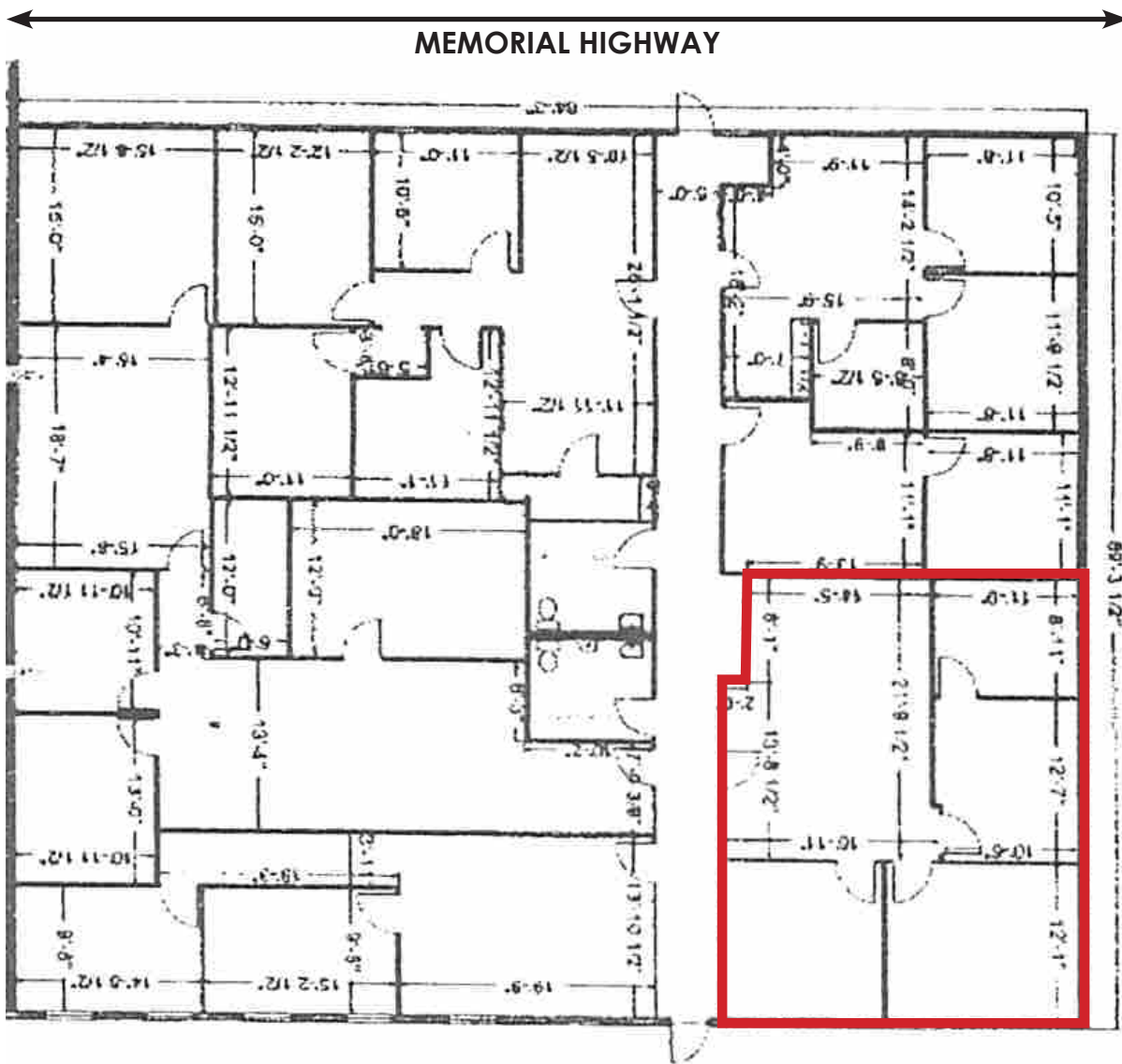
701.223.2450

mike@aspengrouprealestate.com

424 S 3rd Street, Suite 2 | Bismarck, ND | WWW.ASPENGROUPREALESTATE.COM

This information has been secured from sources we believe to be reliable, but we make no representation or warranties, expressed or implied, as to the accuracy of the information. All references to age, square footage, income and expenses are approximate. Buyers or lessors should conduct their own independent investigations and rely on those results.

FLOOR PLAN



Mike Ilse

Broker Associate | Partner
Commercial Realtor®

701.223.2450

mike@aspengroupprealstate.com



WWW.ASPENGROUPPREALESTATE.COM

INTERIOR PICTURES



Mike Ilse

Broker Associate | Partner
Commercial Realtor®

701.223.2450

mike@aspengrouprealestate.com

LOCATION MAP & TRAFFIC COUNTS



Intersection of Washington & Memorial Hwy = 5,795 Average Daily Travel



Mike Ilse

Broker Associate | Partner
Commercial Realtor®

701.223.2450

mike@aspengrouprealestate.com