



AREA 57

COMMERCIAL RETAIL OR OFFICE SPACE  
202.208.220 & 226 E GREENFIELD LANE, BISMARCK

**FOR LEASE**

**Mike Ilse**

701-223-2450

mike@aspengrouprealestate.com

**Charles Reichert**

701-223-2450

charles@aspengrouprealestate.com





# PROPERTY OFFERINGS

**AREA 57**  
202.208.220 & 226 E GREENFIELD LANE, BISMARCK



Aspen Group LLP is pleased to offer, this one-of-a-kind multi-purpose environment where living, shopping, working, playing and socializing coexist.

The subject property consists of 4 mixed-use buildings ideally situated in rapidly growing North Bismarck.

**LEASE RATE: \$21.00 PSF**

**CAM: \$5.50 PSF | TERM: 5 Years**

## Mike Ilse

**BROKER ASSOCIATE | PARTNER | COMMERCIAL REALTOR®**

701.223.2450 | [mike@aspengrouprealestate.com](mailto:mike@aspengrouprealestate.com)  
424 South 3rd Street, Suite 2 | Bismarck, ND 58504  
[aspengrouprealestate.com](http://aspengrouprealestate.com) | [@aspengroupllp](https://www.instagram.com/aspengroupllp)

## Charles Reichert

**COMMERCIAL REALTOR®**

701.223.2450 | [charles@aspengrouprealestate.com](mailto:charles@aspengrouprealestate.com)  
424 South 3rd Street, Suite 2 | Bismarck, ND 58504  
[aspengrouprealestate.com](http://aspengrouprealestate.com) | [@aspengroupllp](https://www.instagram.com/aspengroupllp)

*\*\*Subdivided space available. Details and rates are subject to change at any time. Contact us for more information.*



# HIGHLIGHTS

**AREA 57**  
202.208.220 & 226 E GREENFIELD LANE, BISMARCK



- Serves as a multi-purpose environment where living, shopping, working, playing and socializing coexist.
- State-of-the-Art New Construction
- Located in North Bismarck just off of Washington Street. Near major retailers such as Dicks Sporting Goods, HomeGoods, Costco, Fleet Farm and more!
- (4) Mixed-used, 4-story building featuring numerous apartments and street level commercial spaces.

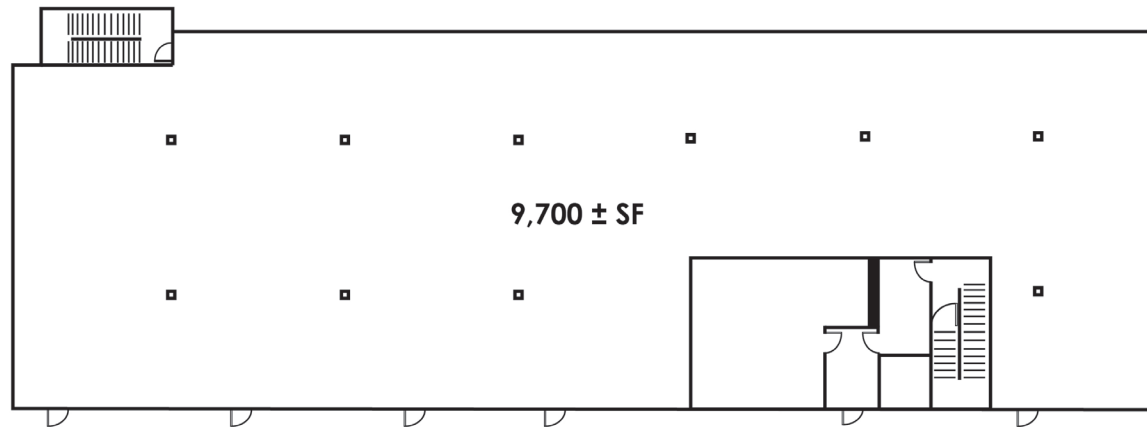


# BUILDING B

**AREA 57**  
202.208.220 & 226 E GREENFIELD LANE, BISMARCK



220 - Building B - 1st Floor



## FIRST FLOOR SIZE:

9,700 ± SF

## PRICING:

\$21.00 PSF + \$5.50 PSF CAM

## HIGHLIGHTS:

- Delivered as a Vanilla Shell
- Can be subdivided
- Details and rates are subject to change at any time

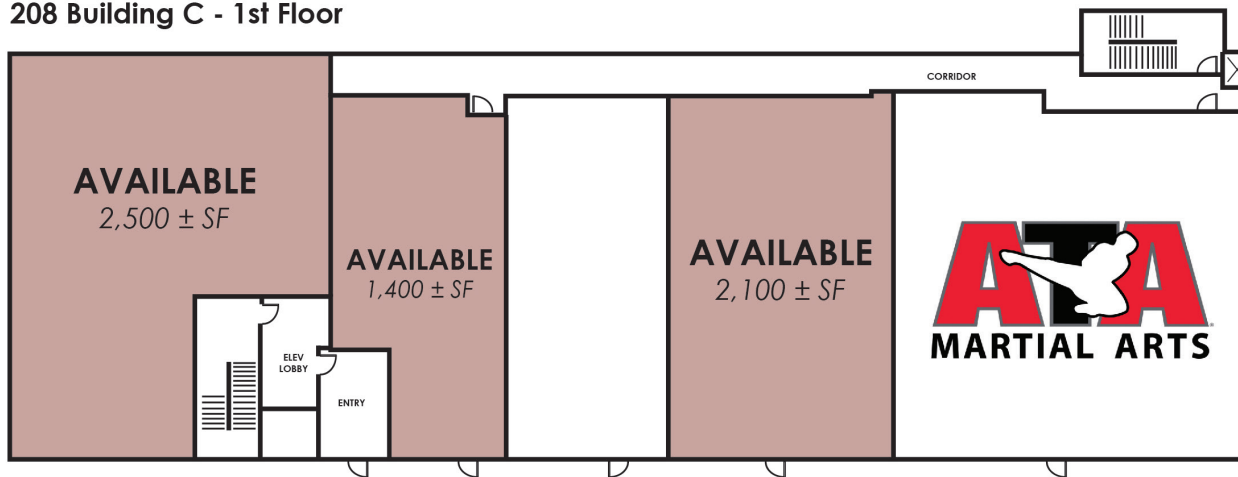


# BUILDING C

**AREA 57**  
202.208.220 & 226 E GREENFIELD LANE, BISMARCK



208 Building C - 1st Floor



**SPACE AVAILABLE:**  
1,400 SF - 2,500 SF

**PRICING:**  
\$21.00 PSF + \$5.50 PSF CAM



# BUILDING D

**AREA 57**  
202.208.220 & 226 E GREENFIELD LANE, BISMARCK



202 - Building D - 1st Floor



**SPACE AVAILABLE:**

1,600 SF

**PRICING:**

\$21.00 PSF + \$5.50 PSF CAM



# EXPERIENCE . . . . AREA 57





**AREA 57**  
202.208.220 & 226 E GREENFIELD LANE, BISMARCK



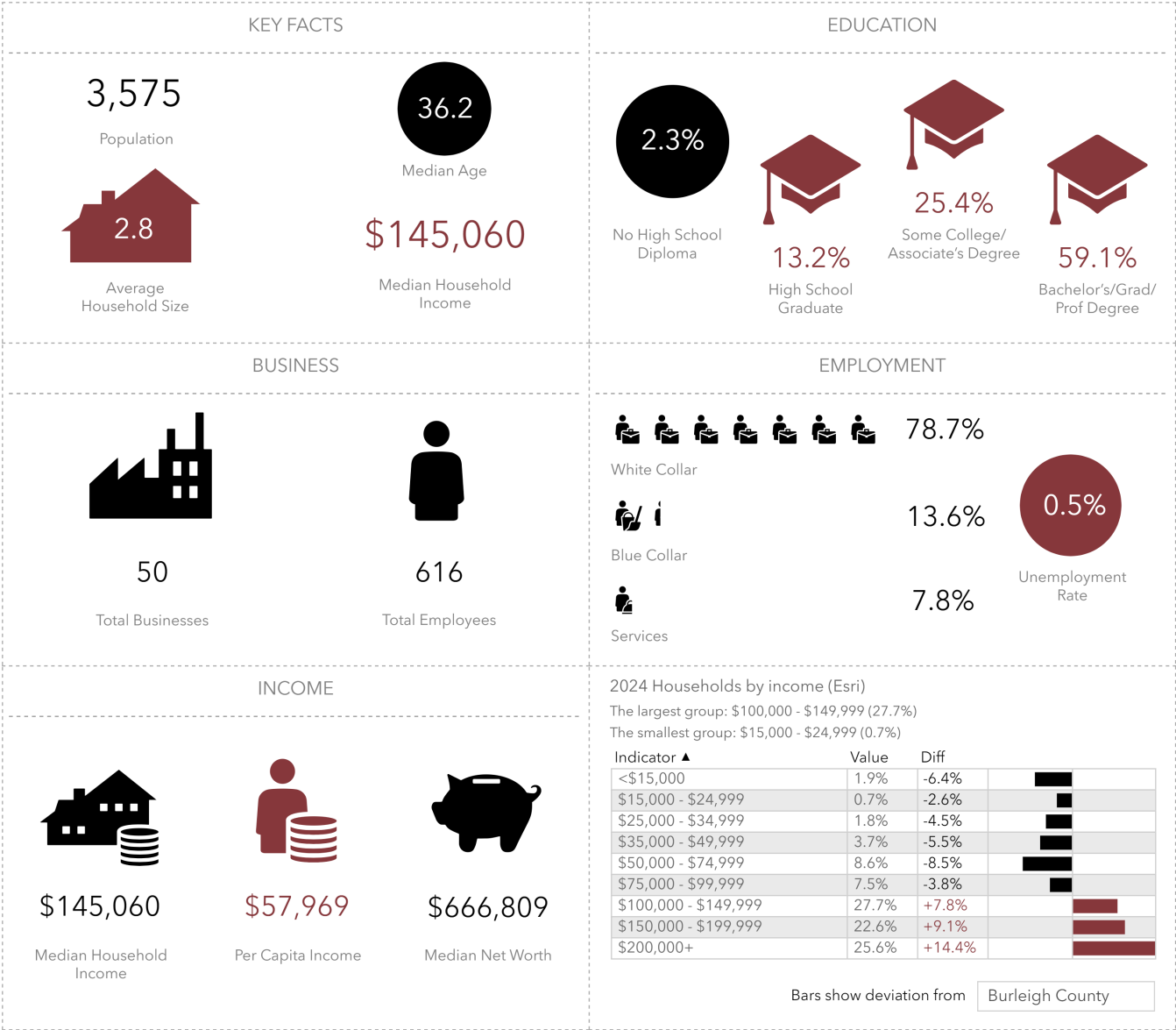


# LOCATION MAP

AREA 57  
202.208.220 & 226 E GREENFIELD LANE, BISMARCK



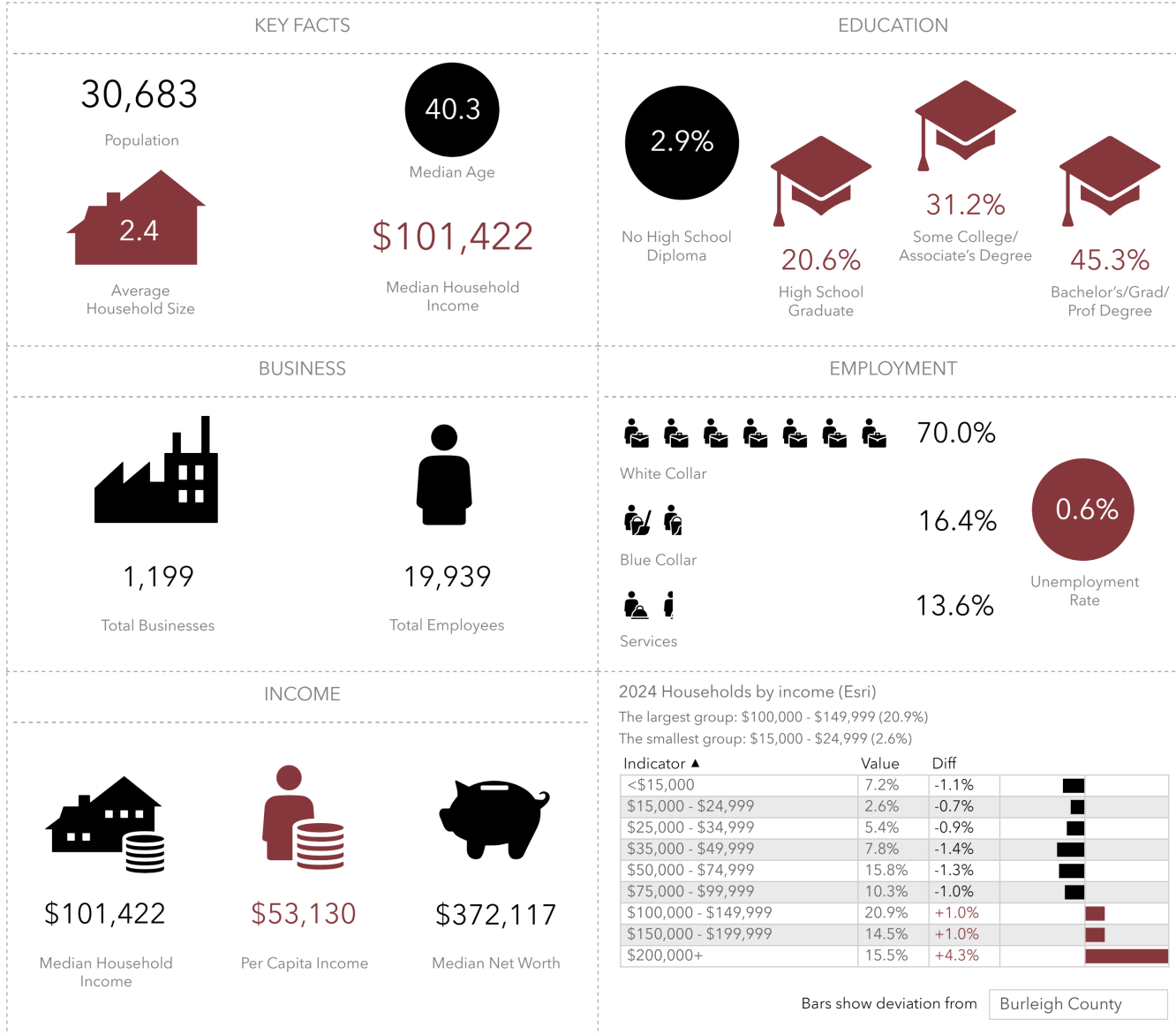




DEMOGRAPHICS

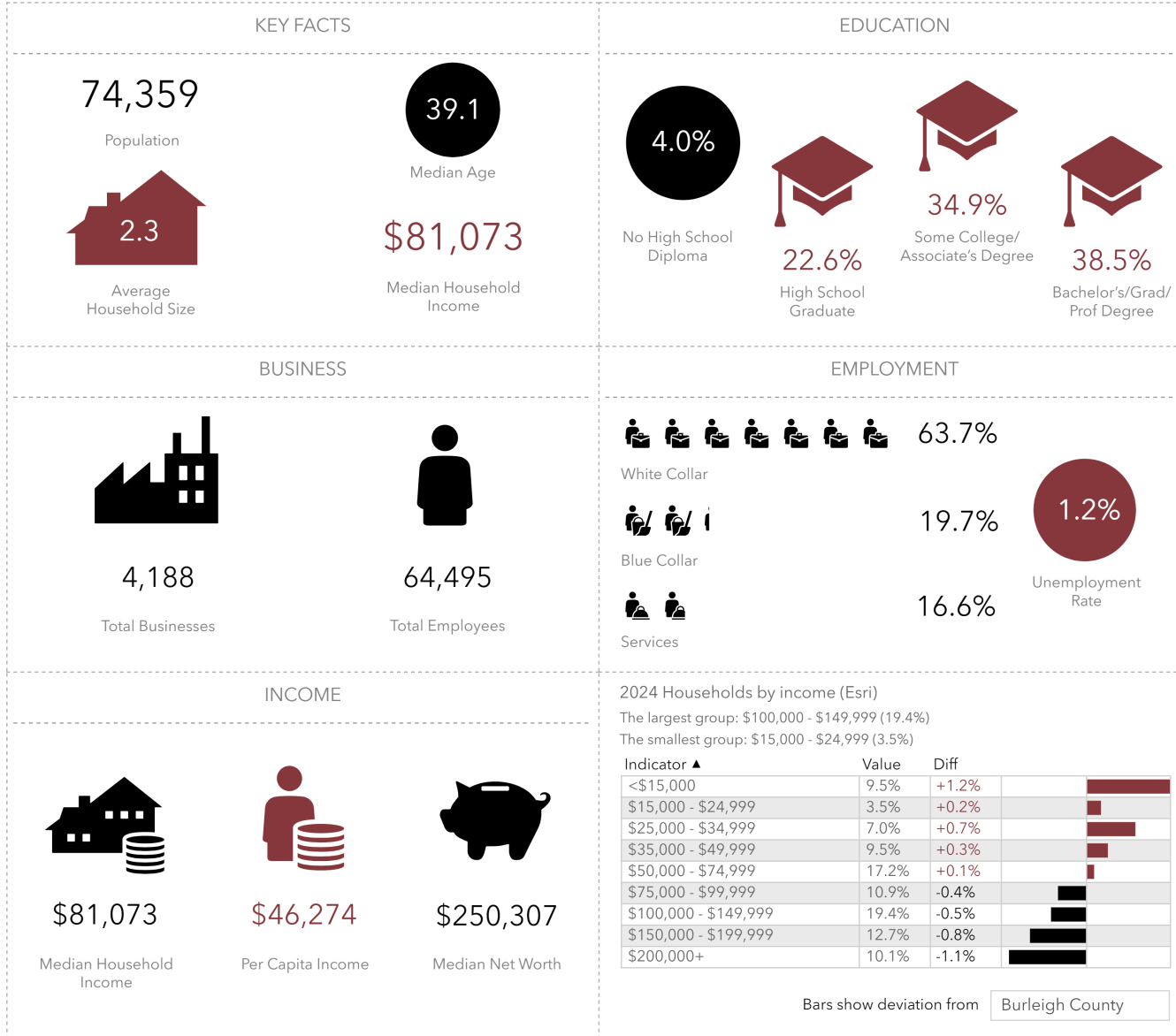
Source: This infographic contains data provided by Esri (2024, 2029), Esri-Data Axle (2024). © 2024 Esri





Source: This infographic contains data provided by Esri (2024, 2029), Esri-Data Axle (2024). © 2024 Esri





Source: This infographic contains data provided by Esri (2024, 2029), Esri-Data Axle (2024). © 2024 Esri





## Mike Ilse

BROKER ASSOCIATE | PARTNER | COMMERCIAL REALTOR®

701.223.2450 | [mike@aspengroupprealstate.com](mailto:mike@aspengroupprealstate.com)  
424 South 3rd Street, Suite 2 | Bismarck, ND 58504  
[aspengroupprealstate.com](http://aspengroupprealstate.com) | [@aspengrouplp](https://www.instagram.com/aspengrouplp)

## Charles Reichert

COMMERCIAL REALTOR®

701.223.2450 | [charles@aspengroupprealstate.com](mailto:charles@aspengroupprealstate.com)  
424 South 3rd Street, Suite 2 | Bismarck, ND 58504  
[aspengroupprealstate.com](http://aspengroupprealstate.com) | [@aspengrouplp](https://www.instagram.com/aspengrouplp)

